

AxTraxNG v27.7.0.8

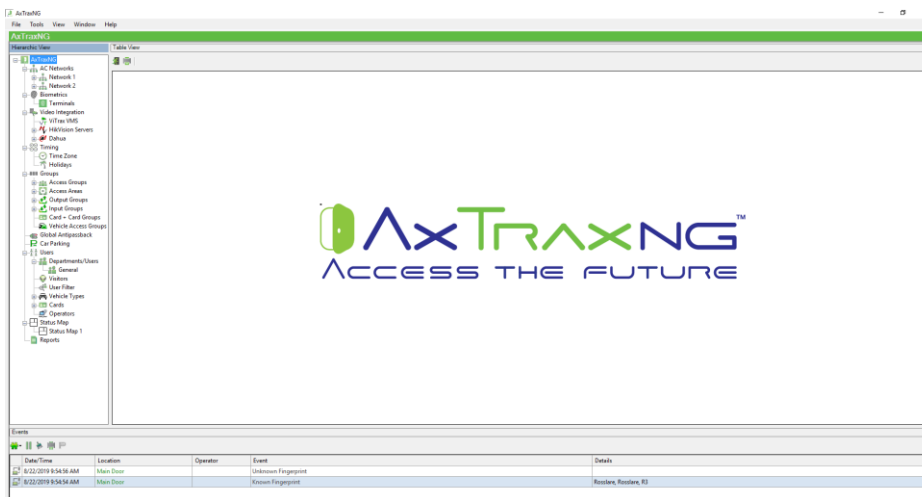
System Release Notes

1. General

- Product Name: AxTraxNG™ Server / AxTraxNG™ Client
- Release Software Version Number: 27.7.0.8: Full Release Version (This Version to be shipped with all future product shipments)
- Date of Release: 27th August 2019

The installer file, datasheet and manual for this version are available from the downloads section of the Rosslare web site.

- Previous Software Release Version Number: 27.6.1.6 (14 March 2019)
- Product Summary: Setup includes AxTraxNG™ Server/Client and AxTraxNG™ Server Monitor, Rosslare ViTrax™ and prerequisite redistributables



Release Overview

Following the previous release of AxTraxNG V 27.6.1.6 (March 14, 2019), this release of AxTraxNG V 27.7.0.8 (August 27, 2019) is the newest major release version of the V 27.7.x.x and aligns all of the latest Bug fixes, and system optimization of all major cases encountered in 2019. This optimized system has undergone automated testing, and live site optimization in systems with 100's of control panels.

Here is the overview of the release:

If you were requested to install a patch by Rosslare's Technical Support Group for the previous version, this release will include these within installation package.

In addition this version has resolved multiple bugs and issues that were reported in the previous version.

Biometric Fingerprint Management – Integration – RosslareBio™ 9000 Series:

This is a new line of high-end professional biometric terminals from Rosslare which have multiple credentials operation for PIN Code / Fingerprint with Liveness Check / Dual Camera 2D Face Recognition with IR Illumination / RFID Card Reader and Bluetooth Credential Operation. The new version offers a seamless integration to enable support of 9000 series biometrics for any AxTraxNG system that have been upgraded to V 27.7.x.

Supported Hardware Products:

“825-Panel”

AC-825IP (Networked Control Panel built into ME-1515 Enclosure)
AC-825IP-PCBA (Control Panel Only)
R-805 - (16 Relay Output Expansion for AC-825IP)
S-805 - (8 Sensor Input Expansion for AC-825IP)
D-805 - (4 Reader door Interface Expansion for AC-825IP)
P-805 - (16 Inputs, 8 Relay Output Expansion for AC-825IP)

“A-Panels” (Rosslare Legacy Networked Access Controllers)

AC-215, AC-215IP
AC-225, AC-225IP - (MD-D02, MD-IO84 Expansions for AC-225x)
AC-425, AC-425IP - (MD-D04, MD-IO84 Expansions for AC-425x)

“B-Panels”

AC-215-B - (RS-485 Bus Panel built into ME-1015 Enclosure)
AC-215IP-B - (Networked Panel built into ME-1015 Enclosure)
AC-215-DIN - (RS-485 Bus Panel DIN Cover – No Enclosure)
AC-215IP-DIN - (Networked Panel DIN Cover – No Enclosure)

AC-225-B - (RS-485 Bus Panel built into ME-1015 Enclosure)
AC-225IP-B - (Networked Panel built into ME-1015 Enclosure)
AC-225-DIN - (RS-485 Bus Panel DIN Cover – No Enclosure)
AC-225IP-DIN - (Networked Panel DIN Cover – No Enclosure)
MD-D02B (2-Reader 4 Input 4 output Expansion for AC-225xB)
MD-IO84B (8 Input 4 Output Expansion for AC-225xB)

AC-425-B - (RS-485 Bus Panel built into ME-1015 Enclosure)
AC-425IP-B - (Networked Panel built into ME-1015 Enclosure)
AC-425-DIN - (RS-485 Bus Panel DIN Cover – No Enclosure)
AC-425IP-DIN - (Networked Panel DIN Cover – No Enclosure)
MD-D04B (4-Reader 4 Input 4 output Expansion for AC-425xB)
MD-IO84B (8 Input 4 Output Expansion for AC-425xB)

RosslareBio 8000 Series Fingerprint Terminals

AY-B8520: Indoor networked optical fingerprint with 125 KHz (EM) RFID card reader
AY-B8550: Indoor networked optical fingerprint with 13.56 MHz (MIFARE) RFID card reader
AY-B8620: Outdoor networked optical fingerprint with 125 KHz (EM) RFID card reader
AY-B8650: Outdoor networked optical fingerprint with 13.56 MHz (MIFARE) RFID card reader
DR-B8000: USB 2.0 fingerprint enrollment scanner and desktop reader

Rosslare UHF-SMART series DR-U955BT USB Enrollment Station

DR-U955BT: Desktop enrollment station for UHF, BLE-ID and 13.56 MHz CSN

RosslareBio 9000 Series Fingerprint Terminals (New in this Release)

AY-B9120BT: Outdoor networked optical fingerprint with 125 KHz (EM) RFID card reader
AY-B9150BT: Outdoor networked optical fingerprint with 13.56 MHz (MIFARE) RFID card reader
AY-B9250BT: Outdoor networked optical fingerprint with 13.56 MHz (MIFARE) RFID card reader + LCD + 4 touch buttons and camera
AY-B9350: Indoor networked optical fingerprint with Face recognition + EM (125KHz) and MIFARE (13.56 MHz) card reader
DR-B9000: USB 2.0 fingerprint enrollment scanner and desktop reader

System Release Notes

2. List of Documentation – Manuals / Datasheets

Here is the list of the NEW documents that are available with this release.

(Previously released products documents are not included in the release notes)

All the documents have been uploaded are available from our partner downloads site.

Product Manuals

- AxTraxNG™ 27.7.0.8 Software Installation and User Manual Version 230519
 - The manual is updated with integrated biometric features of the 9000 Series.

Product Data Sheets

- AxTraxNG™ 27.7.0.8 Updated Data Sheet
-

3. Summary of Major Features / Functionality Added

Biometric Fingerprint Management – Integration – RosslareBio™ 9000 Series

- Including Multi-PC Client Enrollment - for large scale DR-B9000 user registration.
 - 10 Finger Hand Map for Enrolment management interface – per user.
 - Adding IP Based Biometric Readers (Tree View – Biometric Networks)
 - Connecting the Wiegand of the biometric reader to the controller
 - Logically associating Access Groups to Readers in the network
 - Automatically synchronizes relevant templates only to the Readers in associated Access Groups.
 - Supports Wiegand 26 and 34 bits
 - AY-B9250BT and AY-B9350 supports access attempt snapshot
 - AY-B91x0BT and AY-B9250BT support Rosslare BLE-ID and BLE-Admin mobile apps
-

4. Issues Resolved – since previous release V 27.6.1.6

- Report-Translation to Spanish
 - Support TLS encryption on database connection
 - Bio Reports (older Databases not supported)
 - Multiple biometric terminal reset occurs
 - Improved Bio sync operation
 - Update QR code to be same height and width
 - Card design – support employee number on Barcode
 - No user photo is seen on Access popup
 - Configuration mode - in case User start day less than 01-01-2001 will get Access Denied
-

5. Known Issues

- License support 32 Biometric terminals (License can be extended)
- In case of both 8000 and 9000 biometric series are at the same site, users need to enroll on both 8000 and 9000 devices within the same 10-finger GUI
- AY-B9150BT and AY-B9250BT supports MIFARE 13.56 MHz 4 UID cards
- ViTrax™ pop up video stream might show few seconds of delay before displaying
- Snapshot pop-up does not show from some cameras connected to ViTrax
- “Biometric Only” option is not working with AY-B9250BT & AY-B9350
- Once using this option the BLE-ID still works in the AY-B91x0BT
- 9000 biometric series liveness check is not available yet

6. Miscellaneous

- It is very important to make sure that the Boot Loaders that are in the control panels and expansions are matched with the version of the control panels so that the firmware update process will be successful.
- Boot Loaders for the control panels and expansions – are not public information for this release note and are only known by Global Tech Support Group (TSG) and Rosslare Manufacturing teams.

7. Languages Supported.

- Arabic
- Chinese, Simplified
- Dutch
- English
- French
- Greek
- Hebrew
- Italian
- Japanese
- Portuguese
- Russian
- Serbian
- Slovenian
- Spanish
- Swedish
- Turkish
- Bulgarian

8. Firmware Versions for 27.7.0.8

Software Version	Panel Model	Firmware Ver
AstraxNG V27.7.0.8	AC825	AC825v02.09.13.hex
	D805	x805v03.54.hex
	P805	x805v03.54.hex
	S805	x805v03.54.hex
	R805	x805v03.54.hex
	AC425B	ac425v05_01_12
	MDD04B+AC425B	mdd04v02_00(RevB)
	AC425A	ac425v05_01_12
	MDD04A+AC425A	mdd04v00_04
	AC225B	ac225v05_01_12
	MDD02B+AC225B	mdd02v02_00(RevB)
	MDIO84B+AC225B	md-io84v02_00(RevB)
	AC225A	ac225v05_01_12
	MDD02A+AC225A	mdd02v00_13
	MDIO84A+AC225A	io225v00-08
	AC215IPB/AC215B	ac215Bv05_01_12
	AC215IPA	ac215Bv05_01_12
AC215A	ac215v04_08_23	

BIO8000 V1.0.0.3	AY-B8520	V78
	AY-B8620	V78
	AY-B8550	V76
	AY-B8650	V76
	DR-B8000	

BIO9000 V 2.1.7.8	AY-B9120BT	2_003_59
	AY-B9150BT	2_003_59
	AY-B9250BT	v36
	AY-B9350BT	v1.56-011.15
	DR-B9000	

Desktop Reader	DR-U955BT	DR-U995-V_01_06
----------------	-----------	-----------------

- Compatible ViTrax version – Product version 2.5.8, Module version 2.5.8
- Hikvision SDK version - 5.3.2.15
- Dahua SDK version 3.4.8.27787
- Compatible Rosslare ViTrax™ LPR – 1.9.1
- Compatible Rosslare AxTime™ software version 27.0.0.1 (Beta)
- Hikvision_DS-2CD4A26FWD-IZS_FW_v5.4.5
- LPR camera supported: Hikvision_DS-2CD4A26FWD-IZS **FW_v5.4.5**

9. Supported Microsoft Windows OS + Minimum Requirements

- Windows 7
- Windows 8
- Windows 10
- Windows Server

Minimum PC Requirements

Intel i5 or equivalent
 500 GB Hard Disk Space
 4 GB Ram
 10/100 Ethernet Port
 Mouse
 Keyboard
 Display

Contact Information

United States and Canada

Rosslare Security Products, Inc.
Southlake, TX, USA
Toll Free: +1-866-632-1101
Local: +1-817-305-0006
Fax: +1-817-305-0069
support.na@rosslaresecurity.com

Europe

Rosslare Israel Ltd.
Rosh HaAyin, Israel
Tel: +972-3-938-6838
Fax: +972-3-938-6830
support.eu@rosslaresecurity.com

Latin America

Rosslare Latin America
Buenos Aires, Argentina
Tel: +54-11-4001-3104
support.la@rosslaresecurity.com

China

Rosslare Electronics (Shenzhen) Ltd.
Shenzhen, China
Tel: +86-755-8610-6842
Fax: +86-755-8610-6101
support.cn@rosslaresecurity.com

Asia Pacific, Middle East, Africa

Rosslare Enterprises Ltd.
Kowloon Bay, Hong Kong
Tel: +852-2795-5630
Fax: +852-2795-1508
support.apac@rosslaresecurity.com

India

Rosslare Electronics India Pvt Ltd.
Tel/Fax: +91-20-40147830
Mobile: +91-9975768824
sales.in@rosslaresecurity.com



• EN ISO 13485

